



Huawei Data Center Facility Integration Solution



HUAWEI TECHNOLOGIES CO., LTD.





As the growing demand for efficiency, flexibility and low-cost, enterprise need a more flexible and efficient data center to meet changing business needs. Huawei data center facility integration services provide end to end services to help operator, enterprise and government build flexible, green and smart data center.

Build Flexible, Green and Smart Facilities for Data Centers

Smart Investment		Accelerate TTM		Best Practices	
Reduce TCO by 25% @ Operator T		Reduce TTM by 50% @ Operator U		PUE 1.21 @ Operator M	
Consulting	Coordinated Planning	Integrated Design	Integrated Implementation	Smart Management	
 <ul style="list-style-type: none"> • Site selection consulting • Certification consulting 	<ul style="list-style-type: none"> • APP & IT & Facilities • Biz. & Construct. & O/M Dept 	<ul style="list-style-type: none"> • Flexible design • Green design 	<ul style="list-style-type: none"> • Quality Management • Schedule Management 	<ul style="list-style-type: none"> • Real-time Management • 3D Monitoring 	

Solution





Site Selection, Certification Consulting Services:

Based on Huawei experienced process and model, help customer find the best site.

Based on the strategic cooperative partnership between Huawei and Uptime, and Huawei ATD certified engineers, help customer review the drawing, obtain the TIER certification, enhance the brand.

Coordinated Planning Service:

Based on Huawei coordination plan idea, help customer achieve coordinated planning among application, IT and facility, and coordinated planning among business department, construction department and maintenance department, to accurately defines statement of requirement and output reasonable plan.

Flexible, Green Design Service:

Based on Huawei modular design idea, help customer design a flexible architecture to meet business needs, which can achieve scalable capacity, adaptable density and upgradeable availability

Based on Huawei green technology research lab, joint innovation project with industry partner and customer, help customer design a green data center with green energy, green coldness, high efficiency power and high efficiency.

Integration Implementation Service:

Based on Huawei strict quality management system, field construction management process and experienced global delivery team and supply system, help customer fast build a high quality data center.

Smart Management System:

Based on Huawei ManageOne data center unified management system, help customer achieve remote, centralized, intelligent 3D operation and maintenance management, improve management efficiency.

Customized Scenarios:

According to customer requirement, Huawei can provide customized data center solution, including building data center, warehouse data center, prefabricated data center and container data center.



Solution1: Traditional Data Center



Scenarios

- Large Scale
- Traditional construction model
- Power density: more than 4kW/rack

Solution value

- A familiar construction mode
- A familiar management mode
- Easier to meet the requirements of urban land use planning

Reference case

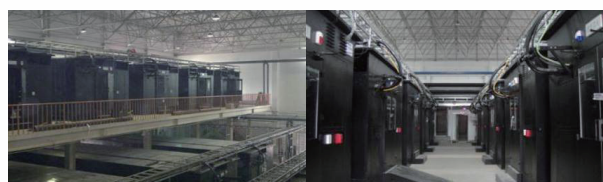
- Project Q: Qingdao, China
- Scale: 21000 m², 3500 racks
- Power density: 5kW/rack
- Delivery time: 3 years

Solution2: Warehouse Data Center



Warehouse

Module



Data Center

Scenarios

- Large-scale
- Use of the old warehouse
- Power density: more than 4kW/rack

Solution value

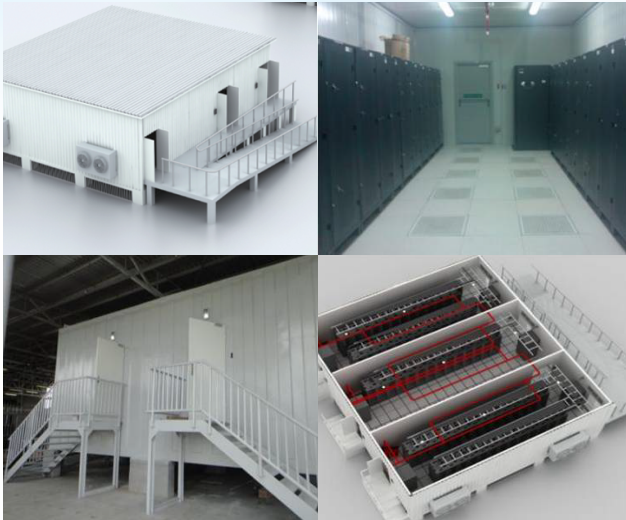
- Fast TTM: save the construction time of building
- Scalable: modular design, factory pre-integrated
- Smart investment: save the CAPEX of building construction

Reference case

- Project: Beijing, China
- Scale: 5600 m², 1100 racks
- Power density: 5kW~10kW
- Delivery time: 6 months



Solution3: Prefabricated Data Center



Scenarios

- Small scale
- Central office
- Power density: 4kW/rack

Solution value

- Fast TTM: factory pre-integrated
- Scale: modular design
- Customized: meet various requirement

Reference case

- Project N: Nigeria
- Scale: 300 m², 48 racks
- Power density: 4kW
- Delivery time: 6 months

Solution4: Container Data Center



Scenarios

- Small scale
- Standard requirement
- Power density: more than 10kW/rack

Solution value

- Fast TTM: deployed in 3 months
- Scalable : modular design
- Green: cold aisle containment, PUE less than 1.5

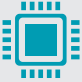



Reference case

- Project K: Shenzhen, China
- Scale: 800 m², 36 racks
- Power density: 10kW/rack
- Delivery time: 3 months



Huawei Data Center Integration Service Capabilities



Professional Team	Professional Tool	Lab	Qualification
<p>1680+ Experts</p> <ul style="list-style-type: none"> • 150+ System architects • 330+ Designers • 200+ PM experts • 1000+ Delivery experts 	<p>30+ Data Center Tools</p> <ul style="list-style-type: none"> • 9 Consulting & planning tools • 10+ Facility design tools • 20+ Facility delivery tools 	<p>3 Global Labs</p> <ul style="list-style-type: none"> • International reliability lab • Data center green technology lab • Data center simulation lab 	<p>3 Qualifications</p> <ul style="list-style-type: none"> • Uptime founding member • ISO(20000, 27001) • China system integration first-grade qualification 

International Recognition



Founding Member of Uptime Network APAC	China Unicom Beijing Huangcun DC	China Mobile Haerbin DC
		



Huawei Data Center Global Presence



78 Operators, 400+ Data Centers, 120+ Cloud Data Centers



Operator Q, Coordinated Planning,
Shorten Pay Back from 6 to 4 Years



Operator T, Scalable Capacity
Design, Reduce TCO by 25%



Operator A, Green Energy Design,
Reduce OPEX by 25%



Operator M, Green Coldness
Design, Achieve PUE 1.21



Operator U, Integrated Implementation,
Accelerate TTM by 50%



Operator M, Smart DCIM, Improve
Management Efficiency by 50%



Huawei Data Center Integration Services

Huawei can provide end-to-end data center integration services for operators, enterprises and governments, ensuring data center high efficient, easy to expand, secure and reliable, low TCO. Huawei data center integration services are composed of two parts:

- Data center facilities integration service focuses on helping customers build flexible, hybrid, smart, adaptive to cloud, green facilities through the method of consulting and planning, designing, implementing, testing, verifying and certifying of TIER.
- Data center IT infrastructure integration service focuses on helping customers build elastic, automatic, high efficient, secure and reliable IT infrastructure through the method of consulting and planning, designing, implementing, testing, migration and business continuity services of data center network and security, server storage and cloud OS, management system.



About Huawei

Huawei is a leading global ICT solutions provider. Through our dedication to customer-centric innovation and strong partnerships, We have established end-to-end capabilities and strengths across the carrier networks, enterprise and customers by providing competitive ICT solutions and services. Our products and solutions have been deployed in over 140 countries, serving more than one third of the world's population.

Copyright © Huawei Technologies Co., Ltd. 2014. All rights reserved.

No part of this document may be reproduced or transmitted in any form or by any means without prior written consent of Huawei Technologies Co., Ltd.

Trademark Notice

 , HUAWEI, and  are trademarks or registered trademarks of Huawei Technologies Co., Ltd. Other trademarks, product, service and company names mentioned are the property of their respective owners.

NO WARRANTY

THE CONTENTS OF THIS MANUAL ARE PROVIDED "AS IS". EXCEPT AS REQUIRED BY APPLICABLE LAWS, NO WARRANTIES OF ANY KIND, EITHER EXPRESS OR IMPLIED, INCLUDING BUT NOT LIMITED TO, THE IMPLIED WARRANTIES OF MERCHANTABILITY AND FITNESS FOR A PARTICULAR PURPOSE, ARE MADE IN RELATION TO THE ACCURACY, RELIABILITY OR CONTENTS OF THIS MANUAL.

TO THE MAXIMUM EXTENT PERMITTED BY APPLICABLE LAW, IN NO CASE SHALL HUAWEI TECHNOLOGIES CO., LTD BE LIABLE FOR ANY SPECIAL, INCIDENTAL, INDIRECT, OR CONSEQUENTIAL DAMAGES, OR LOST PROFITS, BUSINESS, REVENUE, DATA, GOODWILL OR ANTICIPATED SAVINGS ARISING OUT OF OR IN CONNECTION WITH THE USE OF THIS MANUAL.

HUAWEI TECHNOLOGIES CO., LTD.

Bantian, Longgang District

Shenzhen 518129, P. R. China

Tel: +86-755-28780808

www.huawei.com